

NATURE'S NOMAD



SS22/23 AW

Crafting fashion with human stories

SOLID



NATURE'S NOMAD

As the world emerges from the chaos and the restrictions of the pandemic, we dream of faraway places and the open waves.

We begin the season with a sense of freedom and the urge to spread our wings once again. This fall-winter collection is inspired by travellers in a new and more modern, sustainable world by land and sea. Exploring the worlds of Caravan Gypsy girls who travel by land and the sailors who spend their lives on the ocean waves.

We play with crochet and add handcrafted touches to accessories which give a nostalgic, homely feel. Dickies and spencers are added for practical layering options and pixie hats give a nomadic touch for the modern-day traveller. Nature remains a key source of inspiration and multi coloured blanket stripes are blurred and brushed to give exaggerated texture and worked in rich earthy and vegetal hues.

Crochet scarves and headbands complete this artisanal look which is a must have trend for the following seasons. To add to the homespun theme, we brush all our alpaca yarns to add extra cosiness.

Influenced by the traditional sweaters of sailors, we play with nautical stripes and fisherman's ribs enhanced by rustic alpaca yarns. Using uplifting or sometimes muted colours to give a more modern approach to the classic marine sweater whilst updating the shapes. Chunky fisherman's ribs are used on cosy cardigans and offered in strong directional colours of Lavender and Sky Blue.

The colours for this season are inspired by the ocean and the nature which lays around it. Natural colours of pebble and sage, blue tones of sky and ocean. All mixed in with exciting fashion highlights of Lavender and Scarlett.

Fun and fashion directional accessories and layering pieces are key in this collection perfectly complementing our firm favourites such as Almandine and Amber.

Thus, creating an exciting and cosy collection for any modern day expedition.



AMBER - sweater - colour: camel
ZEPHYR - snood - colour: pebble



AELLA - dress - colour: grey mélange
GYPSY - hat - colour: scarlet/pebble /
lavender/grey mélange



AELLA



left:
SKYE -spencer - colour: grey mélange
GIPSY - hat - colour: pebble/sky blue/ocean blue
ONYX - fingerless mittens - colour: ocean blue/pebble
right:
SKYE - spencer - colour: ocean blue
GALENA - scarf - colour: grey mélange



FASHION AS A FORCE OF GOOD





left:
 EMIN - cardigan -
 colour: pebble/sky
 blue/ocean blue
 ONYX - fingerless
 mittens - colour:
 ocean blue/pebble
 right:
 EMIN - cardigan -
 colour: scarlet/pebble/
 lavender/ grey mélange
 ZEPHYR - snood -
 colour: grey mélange



EMIN



left:

DORAN - dog sweater - colour: pebble/sky blue/ocean blue

right:

MICA - headband - colour: pebble

GEMMA - sweater - colour: ocean blue/pebble

DORAN - dog sweater - colour: sky blue/ocean blue/cloudy grey



SAIRA



left:
MICA - headband - colour: new sage
EMIN - cardigan - colour: lavender
right:
SAIRA - wristwarmer - colour: new sage/ocean blue
ULA - hat - new sage/pebble
ALMANDINE - cardigan - colour: new sage



ELVET

ELVET - spencer - colour: new sage/pebble
 COPPER - hat - colour: camel/pebble/ocean
 blue/sky blue
 ZEPHYR - snood - colour: camel





left:
 ARIA - hat - colour: ocean blue
 GALENA - scarf - colour: pebble
 EMIN - cardigan - colour: pebble/sky blue/
 ocean blue
 ONYX - mittens - colour: ocean blue/pebble
 right:
 WANDA - hat - colour: ocean blue/sky blue
 ASRA - scarf - colour: sky blue

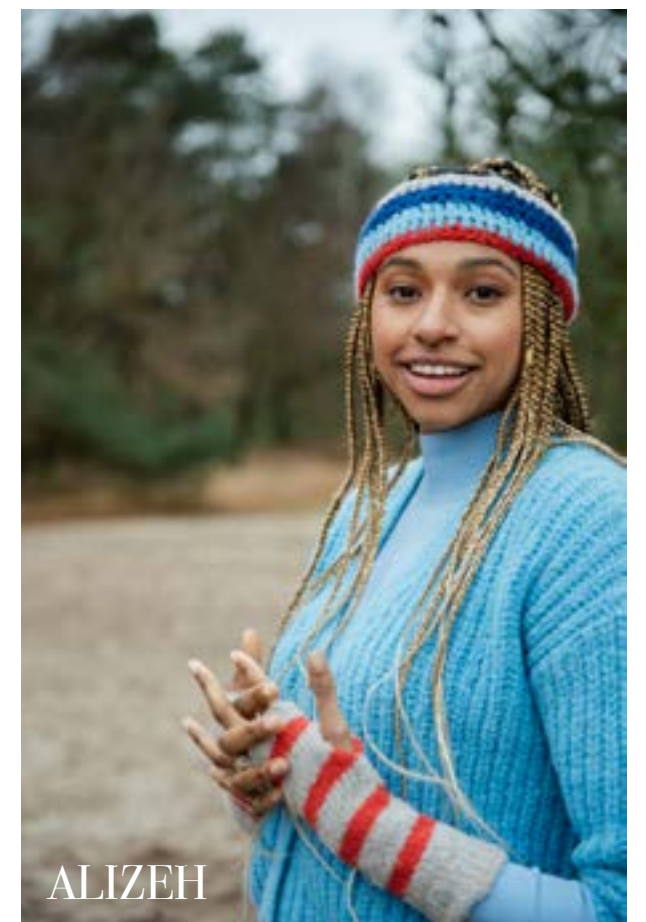


AMBER - sweater - colour: lavender
ASRA - scarf - colour: camel
LAZULI - mittens - colour: camel/pebble





EMIN - cardigan - colour: sky blue
 NOAH - headband - colour:
 pebble/ocean blue/sky blue/
 scarlet
 ALIZEH - long sleeve mittens -
 colour: pebbel/scarlet





EMIN

MICA - headband - colour: ocean blue
EMIN - cardigan - colour: pebble
ALIZEH - long sleeve mittens - colour: ocean blue/pebble



STIG

left:

MICA - headband - colour: new sage/camel/pebble

STIG - dickie - colour: pebble/new sage/cloudy grey/camel

right:

AELLA - dress - colour: new sage

STIG - dickie - colour: camel/new sage/cloudy grey/pebble



ULA - hat - colour: new sage/pebble
GALENA - scarf - colour: lavender
ALMANDINE - cardigan - colour: new sage





MYSTRAL

left:
 AELLA - dress - colour: new sage
 ASRA- scarf - colour: pebble
 right:
 MYSTRAL - long cardigan - colour: new sage
 ALIZEH - long sleeve mittens - colour: new sage/pebble



NOAH - headband - colour: pebble/
camel/lavender/new sage
GALENA - scarf - colour: new sage
SAPPHIRE - sweater - colour: camel/
pebble/new sage/cloudy grey

DORAN - dog sweater - colour:
pebble/camel/new sage





ELVET

ELVET- spencer - colour: pebble/ocean blue
ULA - hat - colour: pebble/ocean blue

ABOUT SOLID



Fashion, hand crafted with a soul and a story. Because how it is made, matters.

> Socio-economic

The workshops of Solid in Peru, India and Kenya create fair work for disadvantaged women. They get the opportunity to master a skill in their job and become a top artisan.

> Fair

We create safe work conditions with fair wages and equal opportunities. Creating a positive impact on the world is what we strive for, always!

> Eco and sustainable

Your handmade knitwear product is made of sustainable, environmentally friendly and animal-friendly materials.

> Setting the standard

For ethical and aesthetical production.
Not charity; fair work.



Albina Rodríguez Huamaní- knitter at Solid Peru

"I have been working with the knitting workshop of Solid in Ayacucho, Peru for 6 years. I have two children, 4 years, and 2 years. I support my two children on my own, thanks to my knitting work.

I used to work as a domestic worker and in restaurants. But one day I found out that Solid was looking for people to give them the opportunity to work with knitting, so I applied and entered the finishing area.

It is very sad when you are looking for a job and they don't accept you with young children, it is almost impossible to find a job and survive. Fortunately, Solid crossed my path.

I am the only one who supports my family: my home and my children depend on me. I have no support from anyone. That is why I am very grateful to Solid and the clients.

Because not only do I have a job and an income, but my children are close to me, because at the knitting workshop there is a Cuna Más (a childcare) for the children of the knitters. My youngest son is there, there is also a PRONOEI, which is a 'Non-standardised Early Childhood Education Programme'. Solid could make the government taking up its responsibility. My 4-year-old daughter is there.

I am very grateful to the clients who order knitted products. Thanks to them, we have a fair job. Especially in my case, because I am a single mother, I don't have the support of my children's father.

The more orders, more mothers will have more honest jobs. May God bless you."



TARKA - hat - colour: pebble/ocean
blue/ sky blue/scarlet
AMBER - sweater - colour: pebble



TARKA



LAZULI - mittens - colour: new sage/pebble
STIG - dickie - colour: mushroom beige/
scarlet/ lavender/ cloudy grey/pebble



left:
 COPPER - hat - colour: mushroom beige/
 scarlet/pebble/ lavender/grey mélange
 ALMANDINE - cardigan - colour: pebble
 ONYX - fingerless mittens - pebble/new
 sage
 right:
 JASPER - headband - colour: new sage
 STIG - dickie - colour: pebble/new sage/
 cloudy grey/camel
 SERENA - gloves - colour: new sage



SERENA

JASPER

left:
SAPPHIRE - sweater - colour:
mushroom beige/scarlet/
lavender/cloudy grey/pebble
JASPER - headband - lavender
right:
STIG - dickie - colour:
mushroom beige/scarlet/
lavender/cloudy grey/pebble





NATURE'S NOMAD

Handknit, high quality knitwear,
ready to wear collection to brand under your label.

- 100% hand knit
- alpaca blends: super soft and anti-allergenic, perfect for your winter knits
- ethically, honestly and fairly made
- sustainable and eco friendly fashion

Besides having all these qualities, the hand knitting also provides underprivileged women in Ayacucho, Peru and their families with chances for a brighter future. These women are incredibly talented and skilled.



ALMANDINE - cardigan - colour: camel
MICA - headband - colour: pebble/sky blue/ocean blue



left:
 MICA - headband - colour: scarlet/ lavender/pebble
 TRIPP - crochet mittens -colour: scarlet/pebble
 SAPPHIRE -sweater - colour: mushroom beige/scarlet/
 lavender/cloudy grey
 LAZULI - mittens - colour: ocean blue/pebble
 right:
 TARKA - hat - colour: pebble/ocean blue/sky blue/scarlet
 BEHR - scarf - colour: scarlet/pebble
 EMIN - cardigan - colour: pebble



left:
 COPPER - hat - colour: mushroom beige/scarlet/
 lavender/pebble
 right:
 ARIA - hat - colour: pebble
 TRIPP - crochet mittens - colour: pebble/new sage
 ALMANDINE - cardigan - colour: mushroom beige



left:
MICA - headband - colour: camel
ALMANDINE - cardigan - colour: new sage
right:
ONYX - fingerless mittens - colour: lavender/pebble



ONYX



COPPER

ALMANDINE - cardigan - colour: pebble
ONYX - fingerless mittens - colour: pebble/new sage
COPPER - hat - colour: mushroom beige/scarlet/lavender




ARIA - hat - colour: scarlet
GALENA - scarf - colour: scarlet
GEMMA - sweater - colour: pebble/scarlet

LET'S RISE BY LIFTING OTHERS



NOMAD OVERVIEW

AELLA
50% FS ALPACA 40% NYLON



NEW SAGE GREY MELANGE

XL/S - Width: 43cm / Length: 70cm
M/L - Width: 39cm / Length: 70 cm

ALIZEH
50% FS ALPACA 40% NYLON



NEW SAGE/PEARL OCEAN BLUE/PEARL PEARL/SCARLET

Width: 8cm / High: 2.5cm

ALMANDINE
50% FS ALPACA 40% NYLON



PEARL NEW SAGE



CAMEL MIDWINTER BLUE

XL/S - Width: 40cm / Length: 69cm
M/L - Width: 36cm / Length: 69cm

MICA
50% FS ALPACA 40% NYLON



PEARL GREY MELANGE LAVENDER



NEW SAGE CAMEL OCEAN BLUE

Width: 24cm / High: 10cm

MICA COLORFUL
50% FS ALPACA 40% NYLON



PEARL/CAMEL/NEW SAGE SKY BLUE/OCEAN BLUE/PEARL SCARLET/LAVENDER/PEARL/OCEAN BLUE MELANGE

Width: 24cm / High: 10cm

MYSTRAL
50% FS ALPACA 40% NYLON



NEW SAGE PEARL

One size - Width: 33cm / Length from shoulder: 53cm

AMBER
50% FS ALPACA 40% NYLON



PEARL LAVENDER



CAMEL MIDWINTER BLUE

XL/S - Width: 40cm / Length: 70cm
M/L - Width: 36cm / Length: 69 cm

ARIA
50% FS ALPACA 40% NYLON



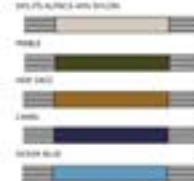
OCEAN BLUE GREY MELANGE NEW SAGE



SCARLET PEARL LAVENDER

Width: 11cm / High: 2.5cm

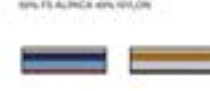
AGRA
50% FS ALPACA 40% NYLON



PEARL NEW SAGE OCEAN BLUE SKY BLUE

Width: 10cm / Length: 10cm

NOAH
50% FS ALPACA 40% NYLON



PEARL/OCEAN BLUE/SKY BLUE/SCARLET PEARL/CAMEL/NEW SAGE/LAVENDER

Width: 22, 3cm / High: 8cm

ONYX
40% FS ALPACA 30% NYLON 30% ACRYLIC



OCEAN BLUE/PEARL PEARL/NEW SAGE



LAVENDER/PEARL CAMEL/PEARL

Width: 8, 10cm / High: 10cm

SAIRA
40% FS ALPACA 30% NYLON 30% ACRYLIC



OCEAN BLUE/SKY BLUE PEARL/CLOAK/EARL NEW SAGE/OCEAN BLUE

Width: 10cm / High: 10cm

BEHR
50% FS ALPACA 40% NYLON



OCEAN BLUE/SKY BLUE PEARL/NEW SAGE SCARLET/PEARL

Width: 11 cm / Length: 69cm

COPPER
50% FS ALPACA 30% NYLON 20% ACRYLIC



PEARL OCEAN BLUE MIDWINTER BLUE PEARL

Width: 10cm / High: 10cm

DORAN
50% FS ALPACA 50% ACRYLIC



PEARL/CAMEL/NEW SAGE PEARL/SKY BLUE/OCEAN BLUE PEARL/SCARLET/LAVENDER OCEAN BLUE/SKY BLUE

Size 1 - Width: 17cm / High: 20cm
Size 2 - Width: 19cm / High: 20cm
Size 3 - Width: 21cm / High: 20cm

SAPPHIRE
40% FS ALPACA 30% NYLON 30% ACRYLIC



CAMEL OCEAN BLUE/SKY BLUE/CLOAK/EARL MIDWINTER BLUE/LAVENDER/SKY BLUE/CLOAK/EARL

XL/S - Width: 40cm / Length: 69cm
M/L - Width: 36cm / Length: 69cm

SERENA
50% FS ALPACA 40% NYLON
With polyester fleece lining



PEARL NEW SAGE OCEAN BLUE PEARL



LAVENDER CAMEL MIDWINTER BLUE PEARL

Width: 8cm / High: 2.5 cm

SKYE
50% FS ALPACA 40% NYLON



GREY MELANGE OCEAN BLUE

XL/S - Width: 43cm / Length: 70cm
M/L - Width: 39 cm / Length: 70cm

ELVET
50% FS ALPACA 40% NYLON



NEW SAGE/PEARL PEARL/OCEAN BLUE

XL/S - Width: 43cm / Length: 70cm
M/L - Width: 39cm / Length: 70cm

EMIN
50% FS ALPACA 40% NYLON



SKY BLUE LAVENDER



PEARL MIDWINTER BLUE

XL/S - Width: 43cm / Length: 70cm
M/L - Width: 39cm / Length: 70 cm

EMIN MELANGE
50% FS ALPACA 40% NYLON



PEARL/CAMEL/NEW SAGE SKY BLUE/OCEAN BLUE/PEARL PEARL/LAVENDER/PEARL/OCEAN BLUE MELANGE

XL/S - Width: 43cm / Length: 70cm
M/L - Width: 39cm / Length: 70 cm

STIC
40% FS ALPACA 30% NYLON 30% ACRYLIC



CAMEL PEARL PEARL

XL/S - Width: 43cm / Length: 70cm
M/L - Width: 39cm / Length: 70 cm

TARKA
50% FS ALPACA 40% NYLON



PEARL/OCEAN BLUE/SKY BLUE/SCARLET PEARL/CAMEL/NEW SAGE/LAVENDER

Width: 22cm / High: 10cm

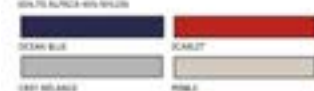
TRIPP
50% FS ALPACA 40% NYLON




OCEAN BLUE/SKY BLUE PEARL/NEW SAGE SCARLET/PEARL PEARL

Width: 8cm / High: 10cm

GALENA
50% FS ALPACA 40% NYLON



OCEAN BLUE SCARLET GREY MELANGE PEARL



NEW SAGE MIDWINTER BLUE

Width: 23cm / Length: 70cm

GEMMA
50% FS ALPACA 40% NYLON



OCEAN BLUE/PEARL PEARL/SKY BLUE

XL/S - Width: 43cm / Length: 70cm
M/L - Width: 39cm / Length: 70cm

GIPSY
50% FS ALPACA 40% NYLON
With polyester fleece lining



PEARL/CAMEL/NEW SAGE SKY BLUE/OCEAN BLUE/PEARL PEARL/SCARLET/LAVENDER

Width: 17cm / High: 20 cm

ULA
50% FS ALPACA 40% NYLON



NEW SAGE/PEARL OCEAN BLUE/PEARL PEARL/SCARLET

Width: 22cm / High: 20cm

WANDA
40% FS ALPACA 30% NYLON 30% ACRYLIC



OCEAN BLUE/SKY BLUE PEARL/CLOAK/EARL NEW SAGE/OCEAN BLUE

Width: 10cm / High: 10cm

ZEPHYR
50% FS ALPACA 40% NYLON



GREY MELANGE PEARL CAMEL

Width: 8cm / High: 2.5cm

PLAIN GIPSY
50% FS ALPACA 40% NYLON
With polyester fleece lining



PEARL GREY MELANGE

Width: 23cm / High: 20 cm


JASPER
50% FS ALPACA 40% NYLON



LAVENDER PEARL NEW SAGE GREY MELANGE

Width: 20cm / High: 8, 10cm

LAZULI
50% FS ALPACA 40% NYLON
With polyester fleece lining



NEW SAGE/PEARL CAMEL PEARL/SCARLET OCEAN BLUE/PEARL

Width: 8cm / High: 2, 7cm



MIDWINTER BLUE CAMEL SKY BLUE OCEAN BLUE NEW SAGE PEARL GREY MELANGE CLOAK/EARL SCARLET LAVENDER

12-400TCK 18-0940 TCK 16-4127 TCK 19-2342 TCK 19-0122 TCK 13-0464 TCK 15-4703 TCK 19-3946 TCK



BEHIND THE SCENES

Want to know your social impact?
Your order can provide fair and honest work for 50 knitting ladies for 3 months!

All of Solid's lovely pieces have been completely handmade with love in a fair way by local Peruvian, Indian and Kenyan women from poor regions in the highlands, remote areas or wildlife regions. They are united by Solid Crafts in fair workshops and community groups that provide meaningful and decent work for those vulnerable, underprivileged yet powerful and strong women. They make beautiful handmade products that inspire both themselves and us to dream of a better world. If you empower women, you empower a whole community.



This photoshoot and brochure could not have been realised without the amazing support of:
Atelier Artuur, Hotel Jerom, Jim Lecaros Reyes, Lisa Lapauw, Manon Heyblom, Michelle Braspenninx, Emiline Eeckelaert, Schoenen en Lederwaren Cools, Victoria Vande Ginste.
INSTAGRAM:

@atelierartuur, @hoteljerom, @victoriavdg, @jim_lecaros, @lisalapauw, @manon.heyblom, michellebraspenninx, @emiline.mua, @schoenenenlederwarencools, @solid.crafts



We really appreciate your interest in our workshops and handcrafted fair-trade products. Whether we produce in India, Kenya or Peru, we strive to rise by lifting others, providing women a brighter future.

For all queries, contact
inge@solidinternational.be
0032 473 93 76 19
and visit www.solidinternational.be
insta: [solid.crafts](https://www.instagram.com/solid.crafts)