

SOLID



ELEMENTS OF NATURE

Crafting fashion with human stories

ELEMENTS OF NATURE



In connection with nature

Air, Fire, Water, Sky and Earth - We increasingly look to nature for solace and inspiration in these modern times.

The Elements of nature collection is our love letter to nature.

This collection for AW 21/22 takes the five elements of nature as a starting point for a relaxed and easy to wear collection of cosy knitwear and knit accessories.

Influenced by the colours and textures of landscapes and woodlands, we use traditional heritage stitches such as fisherman's rib to add texture to natural alpaca blends, sometimes brushing them to add an extra layer of cosiness.

We were inspired by semi-precious stones, rocks and herbs for our colour story, and as always we add the natural marl colours of camel and grey, sometimes spiced up with a hint of Flame or Ocher, making a very rich and harmonious colour palette.

We took note of the must have silhouettes and accessory trends for the coming season, e.g: the sleeveless vest, cropped edge to edge cardigans, balaclavas...

We have added the easy to wear shapes and made them fun in multi stripes or ribs.

Thus creating a collection which has all the right elements and in harmony with the nature around us.





GEMMA

Length XS/S: 60cm Width XS/S: 58cm
 Composition: 55% ALPACA 45% NYLON brushed
 Available colour ways:
 - Sage green & Mushroom beige
 - Mushroom beige & Ochre yellow
 - Barley brown & Mushroom beige





COPPER

Width: 20cm Height: 21cm

Composition: 44% ALPACA 32% NYLON 24% ACRYLIC

Available colour way:

Ground color: Mushroom beige

Stripes: Sage green, Ocher yellow and Barley brown

MICA



Width: 24cm Height: 10cm
Composition: 55% ALPACA 45% NYLON brushed
Available colour ways:
Mulberry red / Midnight blue / Cloudy grey / Sage green
Mushroom beige / Barley brown



Length XS/S: 60cm Width XS/S: 47cm

Composition: 50% ALPACA 50% ACRYLIC

Available colour ways:

Top part: Ochre yellow/Barley brown - Lower part: Mushroom beige/Barley brown - borders: Barley brown

Top part: Barley brown/ Ochre yellow - Lower part: Mushroom beige/Ochre yellow - borders: Ochre yellow



CORNELIAN





Height: 19cm Width: 20cm

Composition:

55% ALPACA 45% NYLON brushed

Available colour ways:

- Mulberry red - stripe: Mushroom beige
- Barley brown - stripe: Mushroom beige
- Sage green - stripe: Mushroom beige
- Mushroom beige - stripe: Ocher yellow



ULA



SAPPHIRE





Length XS/S: 60cm Width XS/S: 50cm

Composition: 44% ALPACA 32% NYLON 24% ACRYLIC

Available colour way:

Mushroom beige ground color - stripes in Sage green, Ochre yellow and Barley brown

AMBER



Length XS/S: 59cm Width XS/S: 50cm
Composition: 55% ALPACA 45% NYLON brushed yarn
Available colour ways:
- Mushroom beige
- Sage green





AMAYA



Width: 17cm Height: 20cm

Composition: 50% ALPACA 50% ACRYLIC

Available colour ways:

- Border: Ochre yellow/Barley brown – top: Mushroom beige/Barley brown
- Border: Flame red/Mulberry red – top: Barley brown/Mulberry red
- Border: in Sage green/Midnight blue – top: Mulberry red/Midnight blue



JASPER

Height: 9cm Width: 20cm

Composition: 50% ALPACA 50% ACRYLIC

Available colour ways:

Sage green / Flame red / Barley brown / Midnight blue / Mushroom beige

LAZULI

A close-up portrait of a woman with voluminous, dark brown curly hair. She is looking directly at the camera with a slight smile. She is wearing a thick, knitted scarf with horizontal stripes in shades of sage green and midnight blue. Underneath the scarf, she wears a green ribbed vest over a white long-sleeved shirt. The background is a soft, out-of-focus light blue.

Width: 8cm Height: 27cm

Composition: 50% ALPACA 50% ACRYLIC

Available colour ways:

- Sage green - stripes in Midnight blue
- Mushroom beige - stripes in Ochre yellow
- Mulberry red - stripes in Flame red



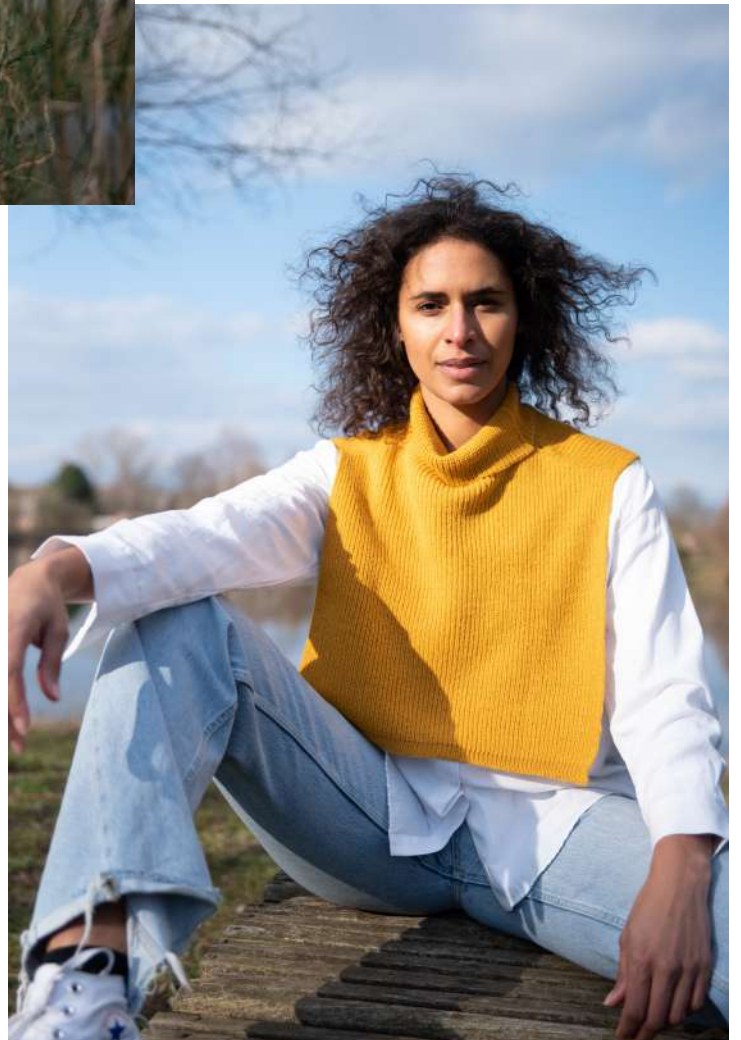


JADE



Length XS/S: 55cm Width XS/S: 46cm
 Composition: 50% ALPACA 50% ACRYLIC
 Available colour ways:
 - Mulberry red - contrast cuff in Barley brown
 - Barley brown - contrast cuff in Mushroom beige
 - Mushroom beige - contrast cuff in Sage green

BERYL





Length: 36cm Width: 38cm
Composition: 50% ALPACA 50% ACRYLIC
Available colour ways:
Ochre yellow / Flame red / Barley brown / Midnight blue /
Mulberry red

AMETHYST





Length XS/S: 52cm Width XS/S: 52cm
Composition: 55% ALPACA 45% NYLON brushed
Available colour ways:
- Mulberry red - cuffs in Mushroom beige
- Barley brown - cuffs in Mushroom beige
- Ochre yellow - cuffs in Barley brown

ALMANDINE





Length XS/S: 50cm Width XS/S: 48cm
Composition: 55% ALPACA 45% NYLON brushed
Available colour ways:
Ochre yellow / Mushroom beige / Barley brown



CRYSTAL



Length XS/S: 60cm Width XS/S: 53cm
Composition: 50% ALPACA 50% ACRYLIC
Available colour ways:
Sage green / Mushroom beige / Barley brown
with buff or without buff

ONYX



Length: 17cm Width: 9,5cm

Composition: 49% ALPACA 39% NYLON 12% ACRYLIC

Available colour ways:

- Mulberry red - border in Flame red
- Cloudy grey - border in Barley brown
- Barley brown - border in Mushroom beige





GARNET

Height: 34cm
Composition: 55% ALPACA 45% NYLON brushed
Available colour ways:
Midnight blue / Mulberry red / Sage green / Mushroom beige



How it's made, matters!

Fair

We create safe work conditions with fair wages and equal opportunities. Creating a positive impact on the world is what we strive for, always!

Eco and sustainable

Your fashion garment is made entirely of sustainable, environmentally friendly and animal-friendly materials.

Setting the standard

For ethical and aesthetical production.
Not charity; fair work.

The workshops of Solid in Peru, India and Kenia create fair work for disadvantaged women. They get the opportunity to master a skill in their job, and become a top artisan. By earning a fair wage, they can escape the poverty cycle and become more independent.

Let's rise by lifting others!

ANGELITE





Length XS/S: 50cm Width XS/S: 50cm
Composition: 55% ALPACA 45% NYLON brushed
Available colour ways:
Midnight blue / Mulberry red / Sage green / Barley Brown



SORAYA

Width : 25cm Lenght: 150cm
Composition: 50% ALPACA 50% ACRYLIC
Available colour ways:
- Sage green & Midnight blue
- Mushroom beige & Ochre yellow

FLINT



Width: 20cm Height: 21cm
Composition: 50% ALPACA 50% ACRYLIC
Available colour ways:
- Sage green - stripes: Midnight blue
- Mushroom beige - stripes: Ochre yellow
- Mulberry red - stripes: Flame red

EMERALD



Height: 33,5 cm
Composition: 50% ALPACA 50% ACRYLIC
Available colour way:
- Sage green - stripes: Mushroom beige
- Barley brown - stripes: Mushroom beige

GALENA

Length: 105cm Width hood: 30cm

Composition: 55% ALPACA 45% NYLON brushed

Available colour ways:

Midnight blue / Mulberry red / Sage green / Mushroom beige



JETT

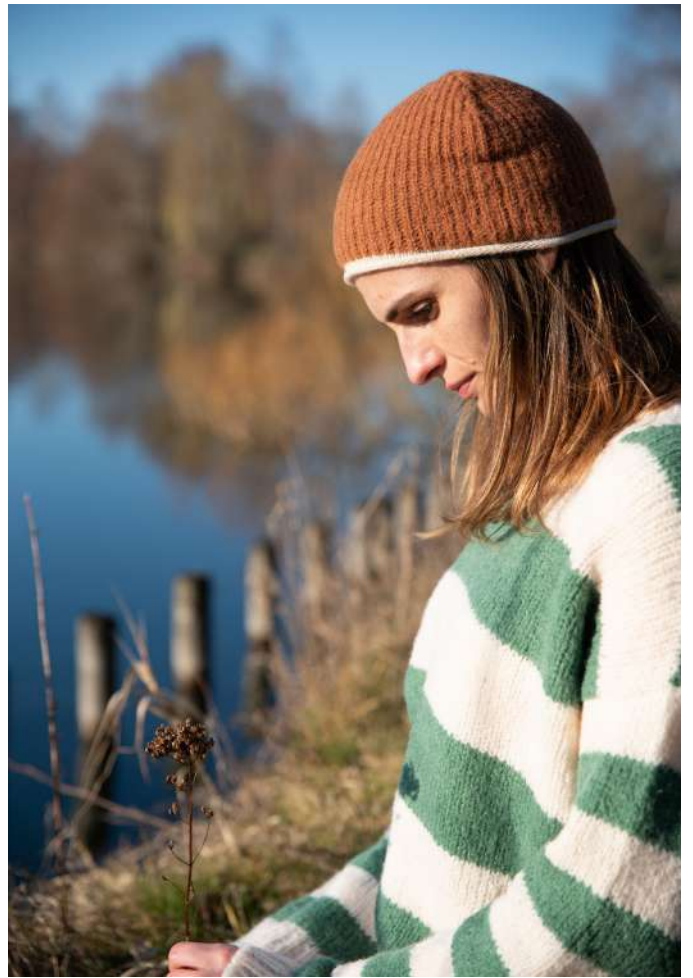


Width : 24 cm Length: 155 cm

Composition: 44% ALPACA 32% NYLON 24% ACRYLIC

Available colour way:

- Mushroom beige ground color - stripes in Sage green, Ochre yellow and Barley brown



OPAL

Height: 19cm Width: 22cm

Composition: 49% ALPACA 39% NYLON
12% ACRYLIC

Available colour ways:

- Mulberry red - stripe in Flame red
- Cloudy grey - stripe in Barley brown
- Barley brown - stripe in Mushroom beige



Width: 7cm Length: 28 cm

Composition: 50% ALPACA 50% ACRYLIC

Available colour ways:

- Top: Flame red/Mulberry red – bottom: Barley brown/Mulberry red
- Top: Ochre yellow/Barley brown– bottom: Mushroom beige/Barley brown
- Top: Mulberry red/Midnight blue – bottom: Sage green/Midnight blue



Elements of nature; a ready to wear knitwear collection

We offer you a beautiful cosy hand knitted ready-to-wear collection you can brand under your private label. Not just any knitwear, but knitwear of the highest quality that is:

- 100% hand knitted
- Made out of alpaca blends: super soft and anti-allergenic, perfect for your winter knits
- Made ethically, honestly and fairly
- Sustainable and eco friendly

Besides having all these qualities, the hand knitting also provides underprivileged women in Ayacucho, Peru and their families with chances for the future. These women are incredibly talented and skilled.

BEHIND THE SCENES

Want to know your social impact?
Your order can provide work for 50 knitting ladies for 3 months!



Rocío Choquecahua Bautista - 39 years:

"I have 3 children. The youngest one is 16 years and still going to school. My partner is a longshoreman.

Before knitting in Solids workshop, I dedicated myself only to the household and to looking after my children. I couldn't get a job because of my children. The little money my partner earned as a loader, was not enough for our family.

Fortunately, I came into contact with Solid 10 years ago and my life changed. First I used to knit with the handneedles, now I learned to handknit with the machine.

Thanks to my knitting job I am able to support my children's food and their studies. Saving together with my husband allowed us to build our house.

I ask the customers to place more orders, so that we have more fair work. Thank you for all your support and believing in us."

All of Solid's lovely pieces have been completely handmade with love in a fair way by local Peruvian, Indian and Kenyan women from poor regions in the highlands, remote areas or wildlife regions. They are united by Solid Crafts in fair workshops and community groups that provide meaningful and decent work for those vulnerable, underprivileged yet powerful and strong women. They make beautiful handmade products that inspire both themselves and us to dream of a better world. *If you empower women, you empower a whole community.*

We really appreciate your interest in our workshops and handcrafted fair-trade products. Whether we produce in India, Kenya or Peru, we strive to rise by lifting others, providing women a brighter future.

For all queries, contact inge@solidinternational.be 0032 473 93 76 19 and visit www.solidinternational.be
insta: solid.crafts



Let's rise by lifting others!